

What's New - RPM GP Connector

Table of Contents

| | |
|--|-----------|
| 1. RPM February 2026 | 2 |
| 1.1. Compatibility with Dynamics GP 18.8 | 2 |
| 1.2. RPM Company Setup Window redesign | 2 |
| 1.3. Price Preview | 3 |
| 1.4. Generate Tests Directly from Diagnostic Logs | 3 |
| 1.5. Name Changes to View Diagnostics | 3 |
| 1.6. Computation Comment Field Added for Pricing Breakdown | 3 |
| 1.7. RPM Now Returns Schedule ID Instead of Price Level..... | 3 |
| 1.8. Document Attribute Selection Enhancements in the RPM GP Connector | 4 |
| 1.9. Improved SOP Batch Transfer Handling for RPM Pricing..... | 4 |
| 1.10. SQL Error Improvements..... | 5 |
| 2. RPM November 2024 | 6 |
| 2.1. Compatibility with Dynamics GP 18.7 | 6 |
| 2.2. Timestamp Logging to Script Log..... | 6 |
| 3. RPM September 2024 | 7 |
| 3.1. Data Sync Enhancements..... | 7 |
| 4. RPM May 2024 | 8 |
| 4.1. RPM Data Sync | 8 |
| 4.2. Company Setup..... | 9 |
| 4.3. Multi-line Calculations | 10 |
| 5. RPM January 2024..... | 12 |
| 5.1. RPM Menu Icon..... | 12 |
| 5.2. Rebuild Toolbars | 12 |
| 5.3. Document Attributes..... | 13 |
| 5.4. Batch Recalc Report | 13 |
| 5.5. Archive and Purge | 14 |
| 5.6. Dismissed Dialogs | 14 |

1. RPM February 2026

RPM Connector for Dynamics GP

What's New/February 2026



1.1. Compatibility with Dynamics GP 18.8

Compatibility with Dynamics GP 18.8

RPM GP Connector has been updated for compatibility with the Microsoft Dynamics GP October 2025 release (18.8).

1.2. RPM Company Setup Window redesign

RPM Company Setup Window Redesign

The RPM Company Setup window has been redesigned to improve usability and configuration clarity. A new Web App – URL field has been added, making it easier to access Price Diagnostics and the Price Preview feature. This enhancement provides direct visibility into the RPM web application endpoint used by the environment, helping administrators simplify setup and troubleshoot more effectively.

Date Source options have also been expanded. You can now select a Date Source of Document Date, Requested Ship Date, Quote Expiration Date, or Order Date for each transaction type, including Quotes, Orders, and Invoices. This provides greater flexibility and control over how dates are applied during pricing.

An additional option is now available to display a message when RPM does not find a price. This setting can be enabled or disabled from RPM Company Settings, allowing organizations to control how missing pricing scenarios are communicated to users.

A new option has also been added to display a progress bar during Batch Transfers. When enabled in RPM Company Settings, the progress bar provides real-time visibility into transfer status, making it easier to monitor batch processing as it runs.

Finally, all Shortcut Key assignments have been moved under the Additional button, which opens a secondary window. This update helps keep the RPM Company Settings page clean while organizing shortcut options in a more centralized location.

1.3. Price Preview

Price Preview

The RPM GP Connector now includes Price Preview, giving users a clear, side-by-side comparison of pricing results across applicable RPM Schedules directly within Dynamics GP. This feature mirrors the powerful analysis tools available in RPM Test Scenarios, making it easier to validate pricing logic, review adjustments, and troubleshoot pricing behavior without switching systems.

1.4. Generate Tests Directly from Diagnostic Logs

Generate Tests Directly from Diagnostic Logs

Users can now create Test Scenarios or Test Documents directly from a Diagnostic Log, allowing quick reproduction of the exact pricing conditions captured in the log. This provides a faster, more accurate way to diagnose and validate pricing behavior.

1.5. Name Changes to View Diagnostics

Name Changes to View Diagnostics

To improve clarity, transaction grid actions have been renamed to better reflect RPM-generated data. View Diagnostics is now Price Diagnostics, making it easier to understand where pricing details and calculations originate.

1.6. Computation Comment Field Added for Pricing Breakdown

Computation Comment Field Added for Pricing Breakdown

A Comment field has been added to the Computations grid to display an overview of how each computation line was calculated, making pricing results easier to understand and troubleshoot.

1.7. RPM Now Returns Schedule ID Instead of Price Level

RPM Now Returns Schedule ID Instead of Price Level

RPM has updated the information returned to the RPM GP Connector. Instead of returning the Price Level on the transaction line, RPM now returns the Schedule ID to the RPM Schedule ID field on Sales Line Details.

This change provides clearer visibility into the exact RPM Schedule used to calculate pricing, improving transparency, diagnostics, and troubleshooting within Dynamics GP. This also means you no longer have to maintain matching Price Levels in Dynamics GP for your RPM Schedule IDs, simplifying setup and maintenance.

1.8. Document Attribute Selection Enhancements in the RPM GP Connector

Document Attribute Selection Enhancements in the RPM GP Connector

The RPM GP Connector includes enhancements to how Document Attribute setups are configured, improving accuracy and usability when selecting transaction line fields.

These updates help prevent invalid field selections while also expanding the number of valid transaction line fields available, making Document Attribute setup more reliable and easier to configure. You als

1.9. Improved SOP Batch Transfer Handling for RPM Pricing

Improved SOP Batch Transfer Handling for RPM Pricing

In the latest RPM GP Connector release, improvements have been made to ensure the SOP Transfer Log (also known as the Batch Transfer Report) correctly handles transaction lines that use RPM pricing.

This report is designed to capture any errors that occur when RPM records are transferred during the standard SOP Batch Transfer process. For example, when an Order is entered, RPM creates pricing records keyed by the SOP Type and SOP Document Number. If that Order is later transferred to an Invoice, the SOP Type and Document Number change, and the associated RPM records must be reassigned to the new document keys. This update ensures those RPM pricing records are transferred accurately.

The SOP Transfer Log automatically runs whenever errors are detected during the RPM portion of the transfer process and cannot be manually enabled or disabled. However, report destination settings can be managed through the RPM Report Options window.

1.10. SQL Error Improvements

SQL Error Improvements

We improved SQL pass-thru error handling in the GP RPM connector. Error messages are now more descriptive, and the message window includes a new Open Log File button for quick access to detailed logs. You can also open an email to Rockton Support with the log file automatically attached, reducing back-and-forth and speeding up issue resolution.

RPM Connector for Dynamics GP

What's New/November 2024



2.1. Compatibility with Dynamics GP 18.7

Compatibility with Dynamics GP 18.7

The RPM GP Connector has been updated for compatibility with the Microsoft Dynamics GP October 2024 release (18.7).

2.2. Timestamp Logging to Script Log

Timestamp Logging to Script Log

A timestamp will now be added to the script log for Rockton Software Foundation products. In the "Enable or Disable Script Logging" window, when logging is enabled, the system will check for the "ScriptLogEnhanced=TRUE" setting in the dex.ini file. If this setting is missing or set to False, the system will prompt you to add it. Be sure to exit Dynamics GP before starting the logging process.

3. RPM September 2024

RPM Connector for Dynamics GP

What's New/September 2024



3.1. Data Sync Enhancements

Data Sync Enhancements

The Data Sync process in RPM has undergone significant enhancements and a comprehensive redesign to improve efficiency, flexibility, and reliability. This update introduces new features like Sync Map Preview, Sync Sets, and Sync Connectors, all designed to streamline data synchronization between various systems. The revamped process now allows for more precise control, faster data processing, and enhanced troubleshooting capabilities, ensuring that your data is always up-to-date and accurately reflected across platforms.

In addition to these improvements, a new SQL View has been introduced to support the RPM and GP Data:

- RPMViewPriceSheet

RPM Connector for Dynamics GP

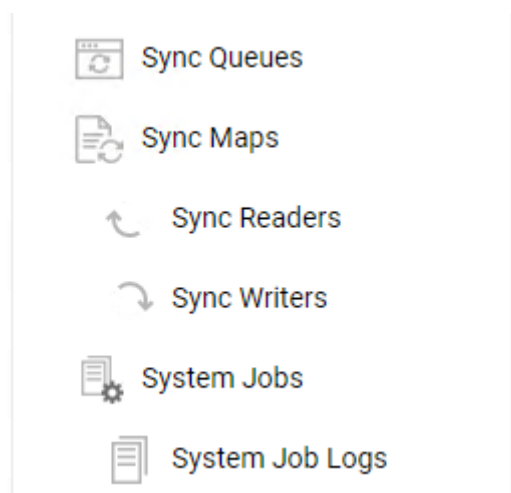
What's New/May 2024



4.1. RPM Data Sync

Data Sync

The new Data Sync feature seamlessly integrates data from your ERP system into RPM, ensuring efficient and synchronized data transfer with minimal latency. Several new entities have been added under the 'Tools' section within Rockton Pricing Management to facilitate this process. These include Sync Queues, Sync Maps, Sync Readers, Sync Writers, and System Jobs, all designed to work together to streamline your data synchronization needs.



In addition to these improvements, new SQL Views have been introduced to support the RPM and GP Data Sync process:

- 9 new views in the COMPANY database:
 - RPMViewCurrency
 - RPMViewCustomers
 - RPMViewGLAccount

- RPMViewItem
- RPMViewItemCurrency
- RPMViewLocationCode
- RPMViewPriceLevel
- RPMViewUofM
- RPMViewUofMSchedule

Furthermore, a new SQL table, RPM0010, is created for each company to support RPM and the Data Sync process. Additionally, a new stored procedure, RPMSyncQueue, has been developed to enhance RPM's Data Sync capabilities.

For more detailed exploration of the RPM Data Sync function, please refer to the Rockton Pricing Management Management manual.

4.2. Company Setup

Company Setup

There have been new fields added to the Company Setup window. This window is used to enable Rockton Pricing Management (RPM) and configure company-wide settings for the company in which you are currently logged in. To access this window, you must be a User in the RPM ADMIN Security Role or the POWERUSER Security Role.

Two new fields have been added:

RPM Company ID

Enter the company ID of the RPM company.

Web Service - URL

Enter the URL of your RPM Web Service.

RPM Company Setup - TWO (sa)

☒ OK
 ☒ Cancel
 ☒ Additional
 ☒ File
 ☒ Tools
 ☒ Help
 ☒ Add Note

☒ Enable Rockton Pricing Management for this Company

RPM Company ID: f9dc073-1417-4958-9da0-61e51c874422

Price Mode: Dynamic

Date Source: Document Date

☒ Prompt to break link with RPM when changing a price
☒ Display warning when RPM does not find a price
☒ Display message when recalculation changes the Unit Price
☒ Show progress during Batch Recalc

Shortcut key assignments

| Sales Transaction Entry | | Sales Batch Entry | |
|-------------------------|---|-------------------------------|----|
| Sales Line Details | Z | Recalculate Batch | B |
| Recalculate Line | R | Recalculate Batch report only | \w |
| Recalculate Transaction | T | | |
| Recalculate Options | O | Sales Distribution Entry | |
| | | Show Adjustment | A |

System Settings

Web Service - URL: https://fabrikamapi.rocktonsoftware.app/

4.3. Multi-line Calculations

Multi-Line Calculations

RPM has been upgraded to enhance the Recalculate Trx Process on Sales Order Processing transactions and Batch Recalculations on Sales batches. It now utilizes Multi-line processing, meaning that RPM simultaneously processes all lines within a transaction to determine the appropriate pricing, based on the criteria established on RPM Settings.

This enhancement is particularly helpful for complex pricing scenarios, such as Buy One, Get One Free (BOGO) offers, or promotions where customers spend a certain amount over a specified period and receive a discount. For instance, consider a scenario where a customer purchases two items at \$100. Under a BOGO offer, RPM will automatically apply the discount based on your setup in RPM.

In another example, imagine a promotion where customers can spend a total of \$200 across various products and receive a flat \$25 discount on their total purchase. In this scenario where a customer buys three items - priced at \$75, \$50, and \$100 - RPM will recognize that the customer's total

spending (\$225) meets the promotional criteria and will automatically apply the \$25 discount to the overall transaction, reducing the total payment due to \$200.

5. RPM January 2024

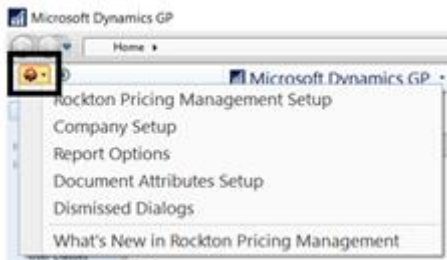
RPM Connector for Dynamics GP

What's New/January 2024



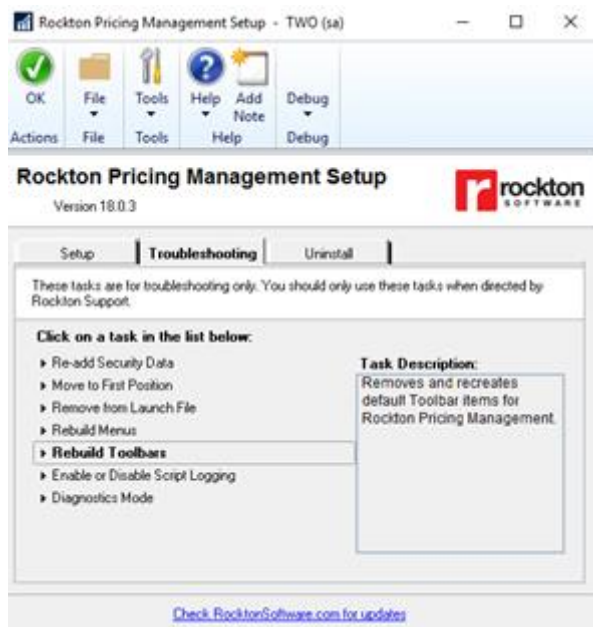
5.1. RPM Menu Icon

A new icon appears for the RPM shortcut on the menu bar. This helps differentiate between the other Rockton Software products.



5.2. Rebuild Toolbars

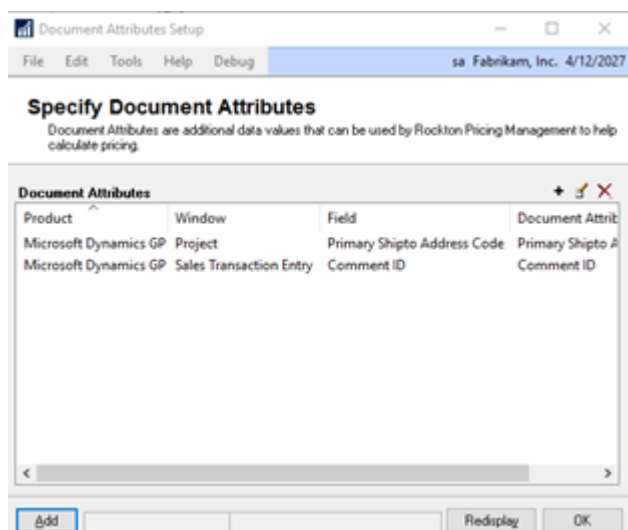
You can now rebuild your RPM Toolbars. This feature is available from the Rockton Pricing Management Setup window, under the Troubleshooting tab. When you click Rebuild Toolbars from the menu, the default toolbar is recreated. This is beneficial should the RPM Toolbar not appear.



5.3. Document Attributes

Previously, Document Attributes were hard coded into RPM and specific fields were used. Now, you may choose what Document Attributes you want to include to help drive the calculated price returned from the pricing engine. Use the Document Attributes Setup window to specify the additional fields you wish to pass to RPM.

This window may be accessed from Microsoft Dynamics GP | Tools | Setup | Rockton Pricing Management | Document Attributes Setup, or from the RPM shortcut on the menu bar.

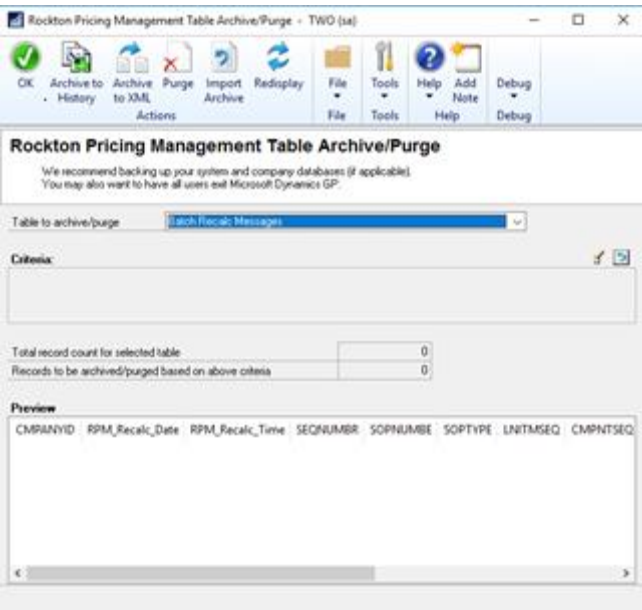


5.4. Batch Recalc Report

When you recalculate a batch of transactions from Sales Batches, you now receive a Batch Recalc Report. This provides you with information on what was recalculated. The Report Options window under Microsoft Dynamics GP | Tools | Setup | Rockton Pricing Management | Report Options allows you to set default options for the report. You can also access this window from the RPM shortcut.

5.5. Archive and Purge

The Rockton Pricing Management Table Archive/Purge window allows you to archive and purge the Batch Recalc messages you receive after you run the RPM – Recalculate Batch process. Access this window from the Rockton Pricing Management Setup window.



5.6. Dismissed Dialogs

The Dismissed Dialogs window allows you to redisplay dialog messages that have been dismissed previously. If you receive a message regarding Document Attribute Instructions and mark the box to dismiss the message in the future, you can use this window to have the message display again. You may access this window under Microsoft Dynamics GP | Tools | Setup | Rockton Pricing Management | Dismissed Dialogs.

Note: The messages are dismissed by User, so changes to these settings will only affect the user making the change, not all users.

